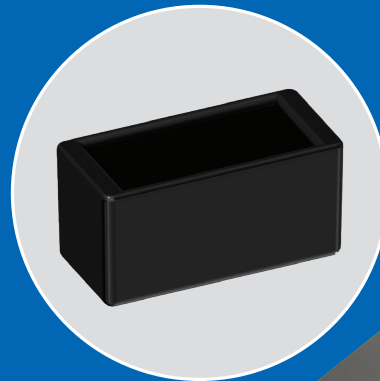


Furniture cover cap for a flat bar

A modern plastic solution that installs with a simple push-fit, requiring no additional tools.

Key product benefits:

- ◆ Easy installation – quick and convenient push-fit mounting;
- ◆ Surface protection – helps prevent floor scratches;
- ◆ Improves furniture stability;
- ◆ Modern design – enhances the appearance of the finished product.

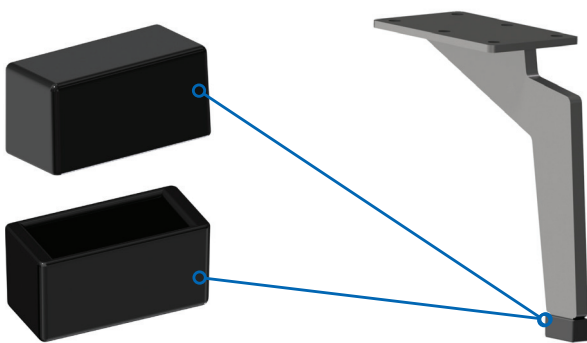


Rectangular flat external end cap

The furniture foot for flat bars is a modern solution designed for manufacturers of furniture legs who want to eliminate the traditional drilling and foot installation process. By mounting directly onto the flat bar, it simplifies production, reduces assembly time, and improves overall efficiency.

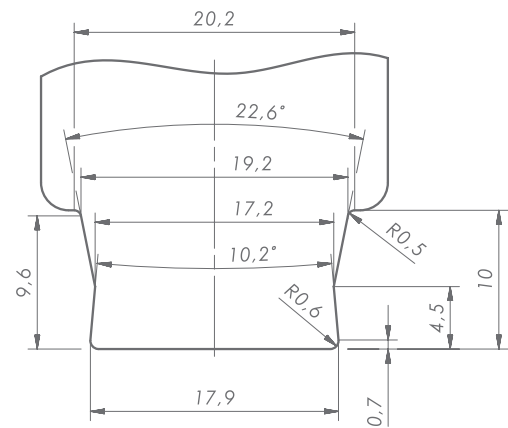
By choosing a furniture foot for flat bars, you get a functional and aesthetically pleasing solution that streamlines the manufacturing process and meets the demands of the modern furniture market.

Rectangular flat external cap Furniture leg

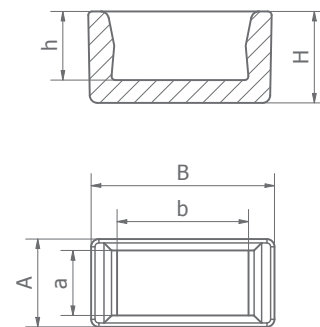


Important installation information:

To ensure a perfect fit of the furniture cap, a laser cut-out must be made according to the template below, maintaining the specified shape.



Sheet thickness: 8.0 mm



ART. NO.	TYPE	b x a [mm]	B x A [mm]	H [mm]	h [mm]
4775	NZPP 18x8	17,9x7,9	24x11,2	11,9	9,0

We carry out custom projects tailored to our customers' individual requirements. We offer a comprehensive range of toolmaking and plastic injection moulding services, from product design and tooling manufacture to production implementation. We manufacture components for the industrial, fencing, and furniture industries. Our products are distinguished by their high manufacturing quality. We ensure reliable supply continuity and fast order fulfilment.

If you are interested, we will be happy to assist you.
Please send your inquiries to: order@tulplast.pl
lub pod numerem telefonu: + 48 61 815 70 16.



Tulplast Socha sp. k.

Wiosenna 27

62-021 Paczkowo, Poland

tel.: +48 61 815 70 16,

e-mail: order@tulplast.pl